

## PERFORMANCE



Additional **processing power** has been added to the platform.

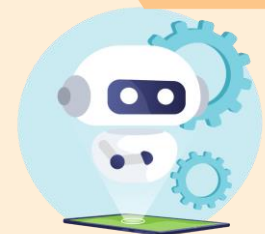


This will improve the **processing speed** of the **dashboard**.



This took effect from 26 July 2023, and should lead to **noticeably faster performance**.

## NEW FEEDBACK CHATBOT



The new Chatbot on the DDD website allows you to submit **comments** and **help requests**, or **report issues**, 24-hours a day.



See the blue button in the bottom right corner of the screen on [www.dbedashboard.co.za](http://www.dbedashboard.co.za).

## HOW WE MANAGE REQUESTS



Use the website chatbot or **email us** to suggest enhancements.



All requests are reviewed, qualified, validated and prioritised to ensure that they:

- add the most value and/or efficiency,
- in the best possible way.

## LATEST ENHANCEMENTS



1

### SIMPLIFIED SUMMARY VISUALS



The first two sections on the Overview and Details pages are simpler.



The School Count and Outstanding metrics are no longer affected by the subject filter.

This change reduces background calculations and will improve the speed of the dashboard.



The Grade Achievement table on the Achievement page now shows current and prior terms, not five terms prior.

2

### BROADER VIEW OF ENTITIES

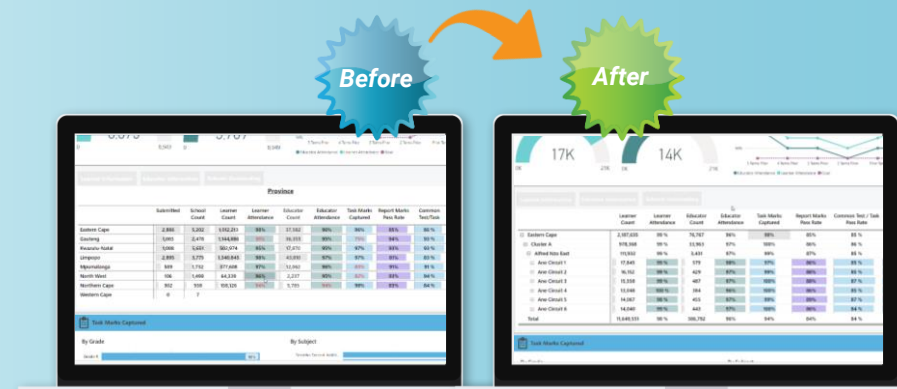
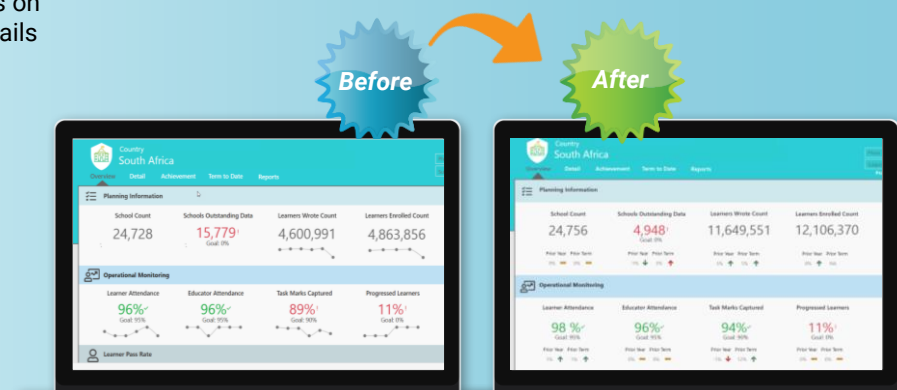


Sub-entity information on the Detail and Term-to-Date pages is now in a "list" view with clickable options to expand the info, to show a broader view of your entity.

This "list" view is also on the School Achievement, Learner Chart and Educator Information Reports, on the Reports page.



Submission and School Count data can still be found in the Schools Outstanding button (top of table).



In addition to providing more granular detail for education officials, the above enhancements simplify some of the background calculations on the dashboard, which should improve the speed.