

FINAL ROLL-OUT

New Valistractor

Enabling easier, faster data uploads to the DDD Dashboard

Download link and installation guidelines

7 FEBRUARY 2024: School users



data driven districts



basic education
Department:
Basic Education
REPUBLIC OF SOUTH AFRICA

New Valistractor

7 February 2024



Please read the guidelines (pg 6) before downloading/installing

WHAT?

The DDD team has built a NEW and significantly improved Valistractor app.

The app was piloted in Aug/Sept last year, and multiple rounds of testing have been completed to ensure that the term-to-date, end-of-term and Term 4 data submission and resubmission processes work smoothly.

This app is now being rolled out to all schools and EMIS users countrywide.

This information pack contains important details of where and how to download and install the new Valistractor, and where to obtain assistance.

WHY?

The new Valistractor is designed to enable easier, faster data uploads to the new DDD dashboard.

This app enables online, offline, batch and provincial submissions, as well as resubmissions, in an automated way.

It also allows for centralised updates, which means that any new versions in future are automatically updated with no action required from users. This mitigates challenges that schools may have previously experienced as a result of running older, different versions of the Valistractor.

CONTENTS

- WHAT** [About the new app](#)
- WHY** [Features & benefits](#)
- WHO** [Online vs offline school users](#)
- WHEN** [Important dates](#)
- HOW** [Step-by-step guide](#)
- HELP** [Contacts & support](#)



[Click to download \(zip file\): **New Valistractor**](#)

New Valistractor

7 February 2024



WHO?

ONLINE: If your school **has internet connectivity most of the time**, and you normally submit your term data online, then:

- You should download and install the new Valistractor using the links and guidelines in this information pack.
- You will then be able to use the new Valistractor to prepare, validate and submit your data.

OFFLINE: If your school is mostly offline, but occasionally has internet access, then:

- Please use the opportunity to install the new Valistractor as per the guidelines in this pack. The new Valistractor is able to work in both online and offline modes.
- If your school has no internet access at all, your local EMIS official will assist you with the installation and set-up process.

CONTENTS

WHAT	About the new app
WHY	Features & benefits
WHO	<u>Online vs offline school users</u>
WHEN	Important dates
HOW	Step-by-step guide
HELP	Contacts & support



[Click to download \(zip file\): **New Valistractor**](#)

New Valistractor

7 February 2024



WHEN?

- Roll-out: Takes place between 7-28 February 2024.
- Installation: All users must install the new Valistractor before the end of February.
- Deactivation: From **end February** the old version of Valistractor will no longer be available; you will be prompted to download the new version instead.

If you access the old version of Valistractor after the end of February, you will see this screen:



CONTENTS

- WHAT** About the new app
- WHY** Features & benefits
- WHO** Online vs offline school users
- WHEN** Important dates
- HOW** Step-by-step guide
- HELP** Contacts & support



Click to download (zip file): **New Valistractor**

New Valistractor

STEP-BY-STEP INSTALLATION GUIDE



HOW?

Read before starting:

- Please allow 30-45 minutes to download, install and check the new Valistractor app.
- Once you have downloaded the file, follow the step-by-step instructions on the next pages to complete the installation.
- After installing, check your desktop for the NEW Valistractor icon (see below). If you still see any old Valistractor icons on your desktop, then **right click on these and delete them** to ensure you only use the NEW Valistractor moving forward.



Correct – keep and use



Delete

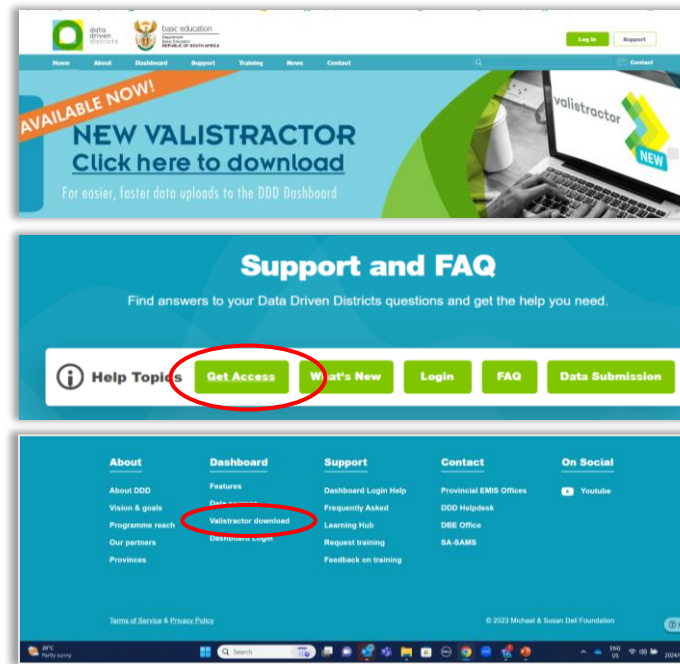


NOTE: If you participated in the beta testing of the new app, your test version will update automatically when you click the download link overleaf. No further action will be needed.



Click to download (zip file): **New Valistractor**

The information in this pack is also available on the DDD website:



CONTENTS

WHAT	About the new app
WHY	Features & benefits
WHO	Online vs offline school users
WHEN	Important dates
HOW	<u>Step-by-step guide</u>
HELP	Contacts & support

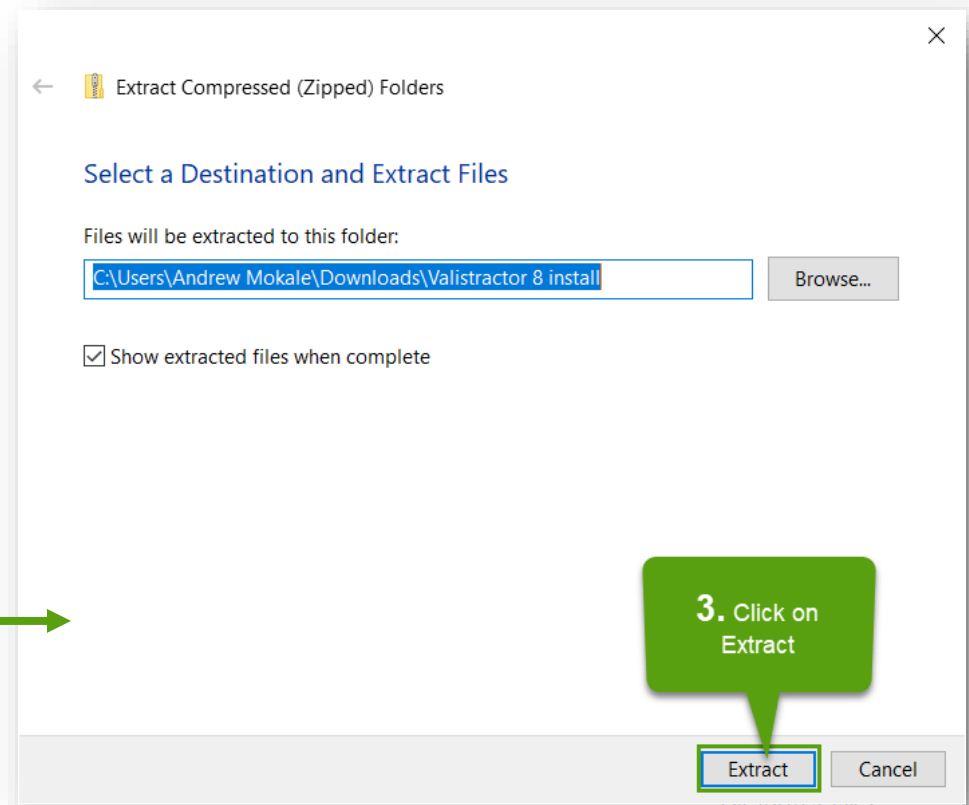
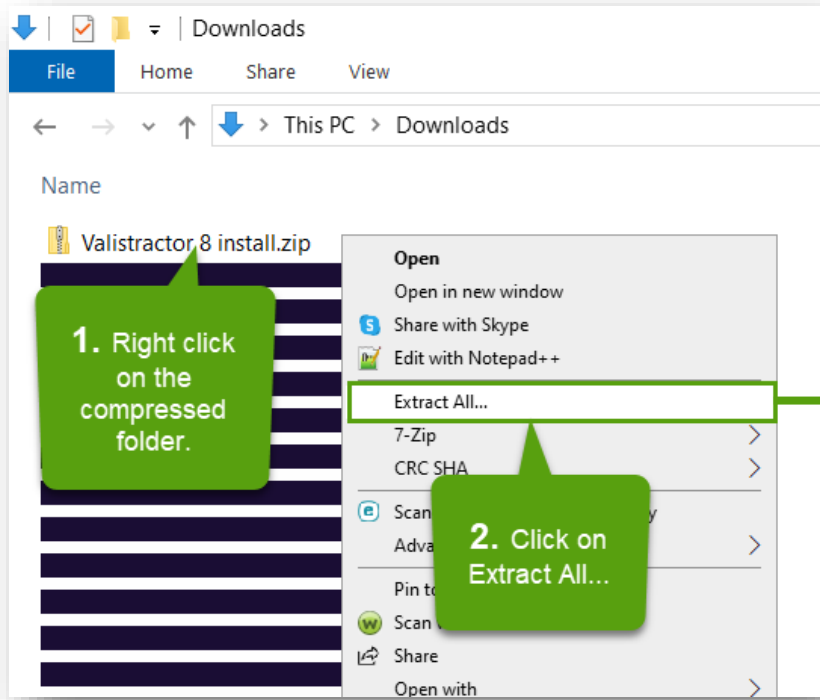
New Valistractor

STEP-BY-STEP INSTALLATION GUIDE



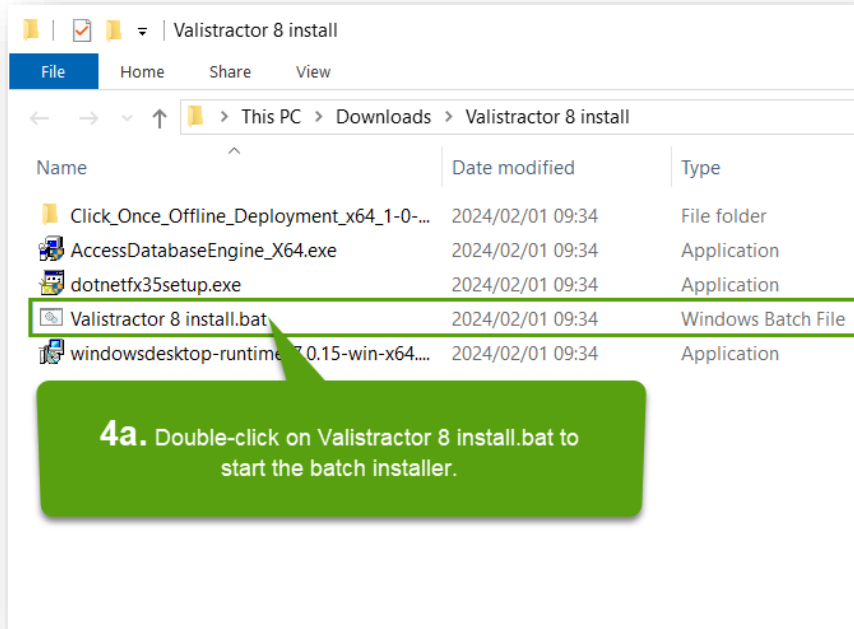
Click here to get the new Valistractor (zip file):
[Download the new Valistractor](#)

STEPS 1-3: Find and extract the Valistractor zip file

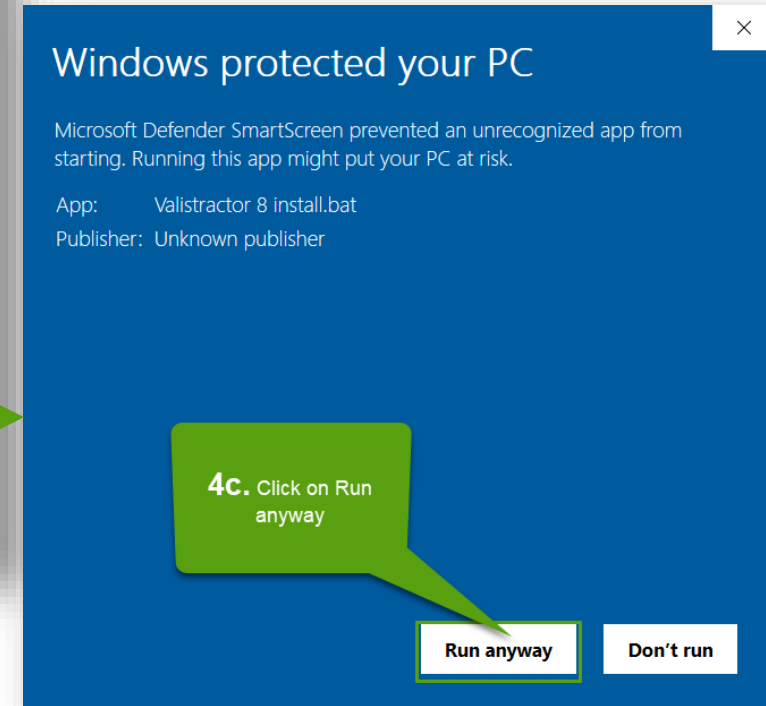
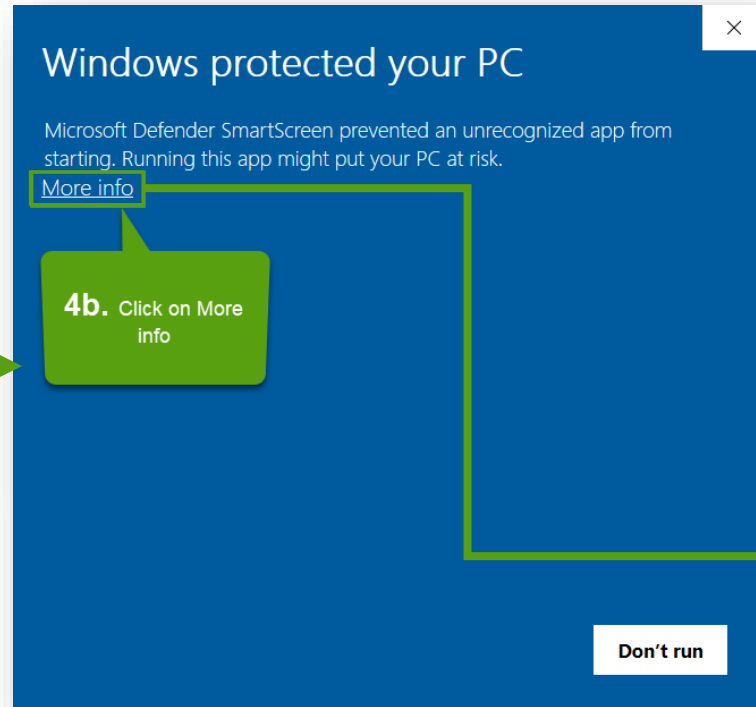


New Valistractor

STEP-BY-STEP INSTALLATION GUIDE



STEP 4: Install the extracted files



New Valistractor

STEP-BY-STEP INSTALLATION GUIDE



STEP 5: Install / admin install

```
C:\WINDOWS\system32\cmd.exe  
Valistractor 2 Online Install Batch File  
Windows Architecture is AMD64, installing 64-bit components  
Check for Windows Desktop Runtime - x64  
Desktop Runtime x64 not found. Installing x64 version interactive
```

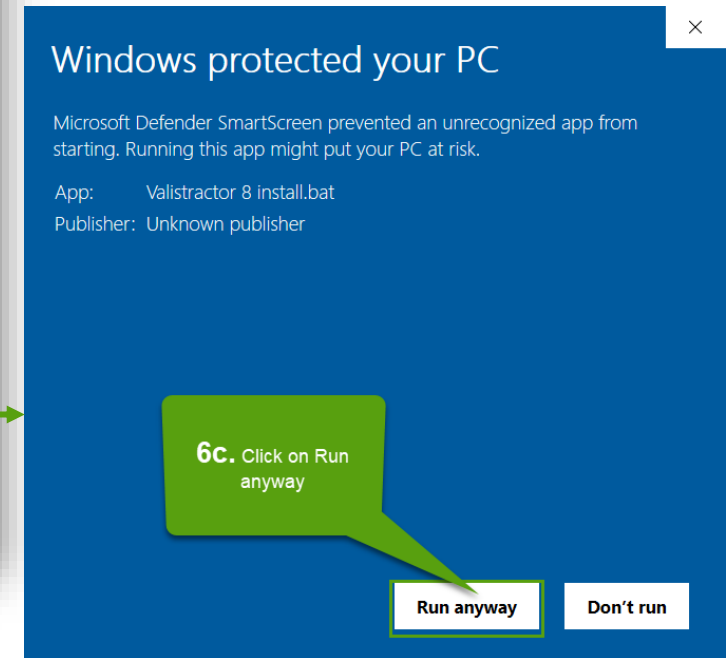
The Batch installer will begin running in the background to call the required software to install and inform you of the installation status at each stage.

New Valistractor

STEP-BY-STEP INSTALLATION GUIDE



STEP 6: Installation continued



New Valistractor

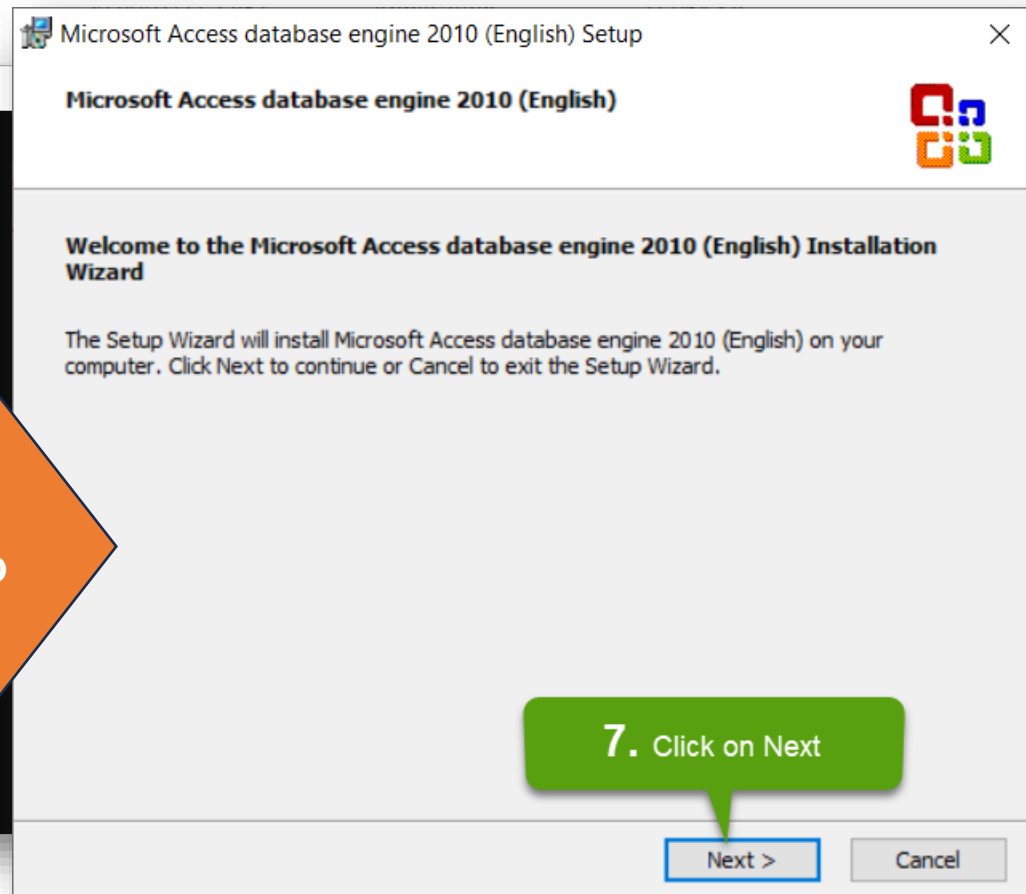
STEP-BY-STEP INSTALLATION GUIDE



STEP 7: Installation set-up

```
C:\WINDOWS\system32\cmd.exe
Valistractor 2 Online Install Batch File
Windows Architecture is AMD64, installing 64-bit components
Check for Windows Desktop Runtime - x64
Desktop Runtime x64 not found. Installing x64 version interactively...
Installation Complete!
Check for Microsoft Access Database Engine - x64
Microsoft Access Database Engine not found. Installing x64 version interactively...
```

! If this Welcome screen does NOT appear, it may be due to an incompatible version of your Microsoft Office application/s. Please contact your EMIS officer or the DDD Helpdesk (help@dbedashboard.co.za) for assistance.





STEPS 8-9: Installation set-up

Administrative privileges not...
Check for Windows Desktop Run...
Desktop Runtime not found. In...
Installation Complete!
Check for Microsoft Access Ru...
Microsoft Access Runtime not

Microsoft Access database engine 2010 (English) Setup

Microsoft Access database engine 2010 (English)

End-User License Agreement

To continue with Microsoft Access database engine 2010 (English) installation, you must accept the terms of the End-User License Agreement. To accept the agreement, click the check box below.

MICROSOFT SOFTWARE LICENSE TERMS

MICROSOFT ACCESS DATABASE ENGINE 2010 REDISTRIBUTABLE

These license terms are an agreement between Microsoft Corporation (or based on where you live, one of its affiliates) and you. Please read them. They apply to the software named above, which includes the media on which you received it, if any. The terms also apply to any Microsoft

- updates,

I accept the terms in the License Agreement

< Back **Next >** Cancel

8. Click on the checkbox to check it.

9. Click on "Next >"



STEP 10: Installation set-up continued

Valistractor 2 Online Installation
Windows Architecture is AMD64
Check for Windows Desktop Runtime
Desktop Runtime x64 not found
Installation Complete!
Check for Microsoft Access Database Engine
Microsoft Access Database Engine

Microsoft Access database engine 2010 (English) Setup

Microsoft Access database engine 2010 (English)

Choose where to install Microsoft Access database engine 2010 (English)

Install Microsoft Access database engine 2010 (English) to:

C:\Program Files\Microsoft Office\ Browse...

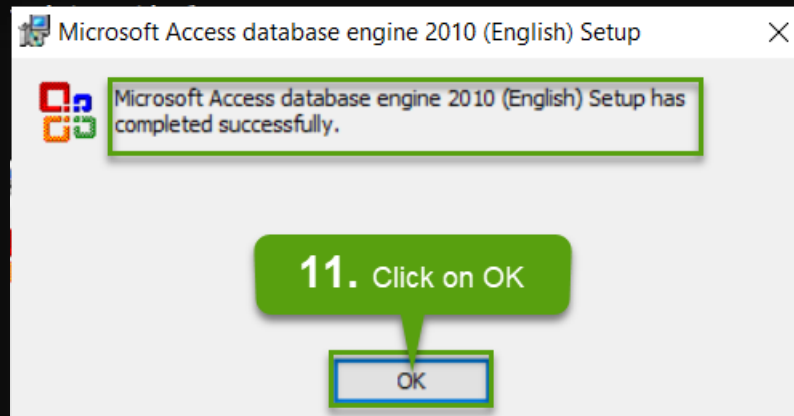
10. Click on Install

< Back Install Cancel



STEP 11: Installation set-up continued

```
Valistractor 2 Online Install Batch File
Windows Architecture is AMD64, installing 64-bit components
Check for Windows Desktop Runtime - x64
Desktop Runtime x64 not found. Installing x64 version interactively...
Installation Complete!
Check for Microsoft Access Database Engine - x64
Microsoft Access Database Engine not found. Installing x64 version interactively...
```





STEP 12: Installation confirmation

Valistractor 2 Online Install Batch File
Windows Architecture is AMD64, installing 64-bit components
Check for Windows Desktop Runtime x64 not installed
Installation Complete!
Check for Microsoft Access Database Engine 2010 Redistributable (x64)
Microsoft Access Database Engine 2010 Redistributable (x64) is installed

Application Install - Security Warning

Do you want to install this application?

Name:
Valistractor

From (Hover over the string below to see the full domain):
valistractor2.blob.core.windows.net

Publisher:
[Michael & Susan Dell Foundation](#)

12. Click on Install

While applications from the Internet can be useful, they can potentially harm your computer. If you do not trust the source, do not install this software. [More Information...](#)



STEP 13: Installation complete

The screenshot shows the Valistractor application window with a menu bar containing: Select Database, Term to Date, Final Validation, Extract Data, Sign Off, and About. A central dialog box titled "Select Database" is open, showing "SA SAMS Database" as the selected database. It includes a "File" input field with a "Browse" button, and "Verify For" options for "Year" (set to 2024) and "Term" (set to 1). "Select" and "Cancel" buttons are at the bottom of the dialog. A green callout bubble above the dialog reads: "13. Valistractor 8.0.... is now successfully installed and you can begin selecting your database, year, and term to validate." A green arrow in the bottom right corner points to a label that says "Version 8.0..."

FINAL ROLL-OUT

New Valistractor

7 February 2024



 **WEBINARS:** Regular support webinars and FAQ sessions will take place throughout February. Keep an eye on your inbox or the DDD Learning Hub for details and booking links.

WHO? DDD Helpdesk: ☎ 011 084 7983 ✉ help@dbedashboard.co.za

Eastern Cape	EMIS: Mr Riaan Janse van Rensburg riaan.jansevanrensburg@ecdoe.gov.za 043 702 7401 DDD: Phindiwe Mtyobo phindiwe@newleaders.co.za	Limpopo	EMIS: Mr Frans Ramphele ramphelelf@edu.limpopo.gov.za 015 290 9421 DDD: Rinae Sikhwari rinae@newleaders.co.za
Free State	EMIS: Mr Hansie Human h.human@fseducation.gov.za 051 404 8335 DDD: Felicity Moshoeshoe felicity@newleaders.co.za	Mpumalanga	EMIS: Mr Wimpie Barnard w.barnard@mpuedu.gov.za 013 766 5492/5566 DDD: Rinae Sikhwari rinae@newleaders.co.za
Gauteng	EMIS: Ms Zoleka Khumalo zoleka.khumalo@gauteng.gov.za 011 355 1000 DDD: Rafiah Ebrahim rafiah@newleaders.co.za	Northern Cape	EMIS: Mr Claude Tshimanika claudetshimanika@ncdoe.gov.za 053 839 6398 DDD: Jantjie Lethea jantjie@newleaders.co.za
KwaZulu-Natal	EMIS: Mr Sandile Dlalisa sandile.dlalisa@kzndoe.gov.za 033 264 1510 DDD: Sibongile Sibanda sibongile@newleaders.co.za Bongekile Hlela bongekile@newleaders.co.za	North West	EMIS: Ms Matshidiso Assegaai massegaai@nwpg.gov.za 018 389 8024 DDD: Naledi Mahwibila naledi@newleaders.co.za

CONTENTS

- WHAT** About the new app
- WHY** Features & benefits
- WHO** Online vs offline school users
- WHEN** Important dates
- HOW** Step-by-step guide
- HELP** [Contacts & support](#)

FINAL ROLL-OUT

New Valistractor

ROLL-OUT: 7 Feb 2024

THANK YOU

for your support!



data
driven
districts



basic education
Department:
Basic Education
REPUBLIC OF SOUTH AFRICA